

Mini Gallery *by Kate Tilley*

**Why not create and curate
your own miniature gallery
and exhibition at home.**



Materials:

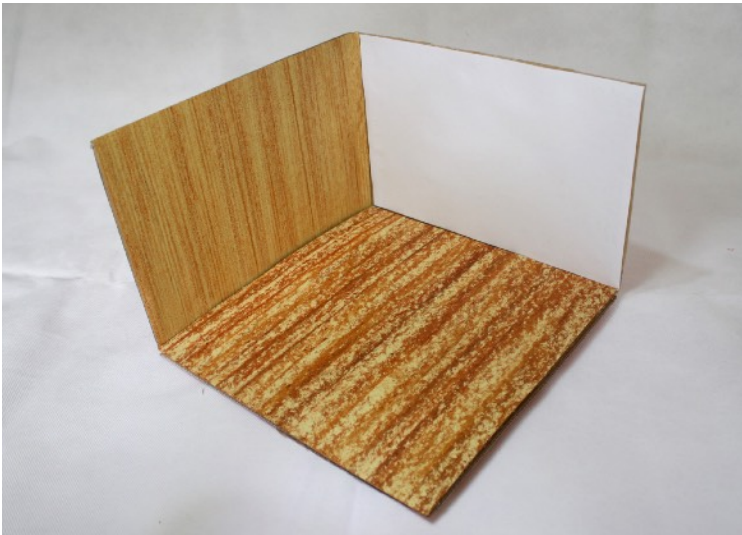
*Cardboard box, pencil, scissors, ruler, glue stick, sticky tape,
(All or some of these - crayons, colour pencils, colour pens, pastels, coloured paper).
Scrap bit of paper and card.*



*Ask a grown up to help you
cut two edges off your
cardboard box to leave a
corner.*

*You can make white walls for
your gallery by sticking white
paper onto your box and then
trimming the edges with scissors.
The New Art Gallery Walsall has
wooden panelling and
floorboards and you can create a
great wood effect with a wax
crayon rubbing.
Put a piece of paper over
something wooden or with a
lined texture, then rub the crayon
on its side onto the paper.*

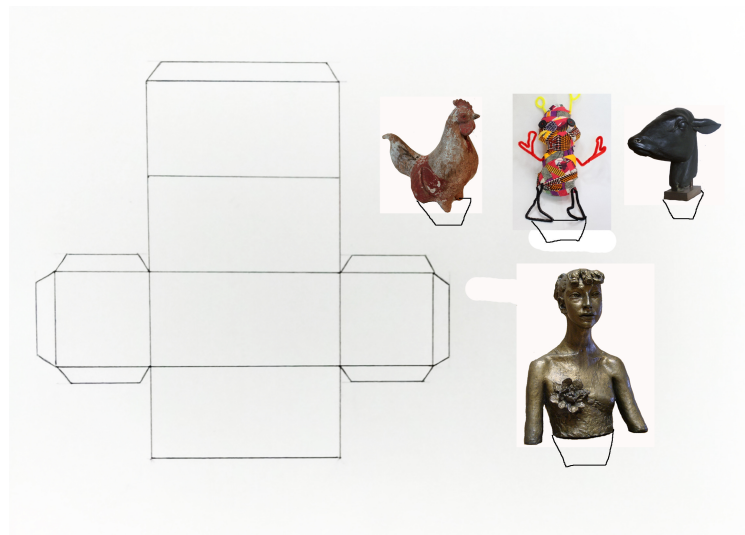




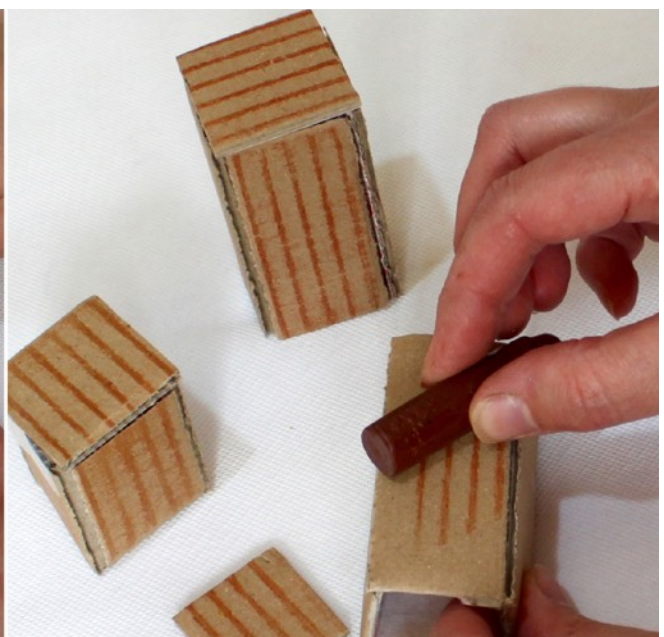
Now you have your empty gallery space, let's fill it with art!

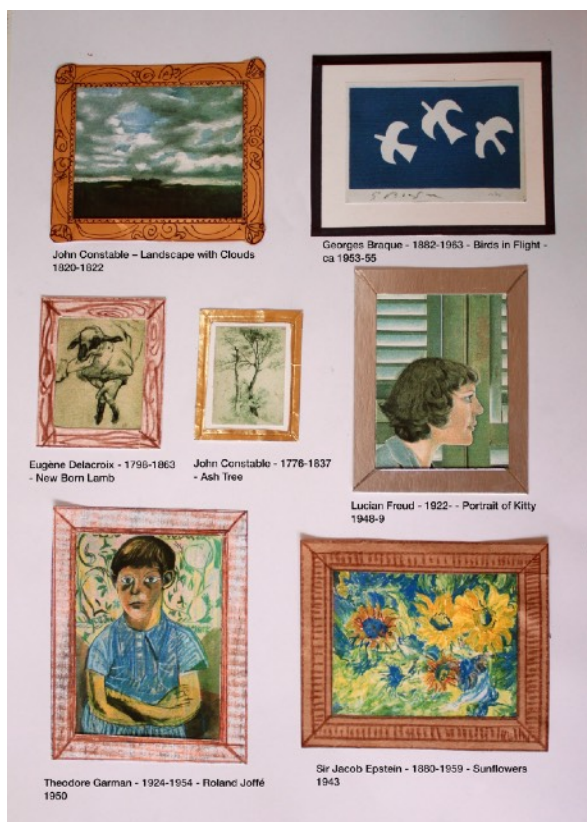
You can cut out, fold and glue a white 'plinth' using the template on the last page of this PDF document.

If you want some wooden plinths draw the width of a ruler 4 times on some scrap box card, then ask a grown-up to score the lines with some scissors so you can fold it. Cut a square for the top and tape it together. Use the crayons again for the wooden texture.



The above template can be found at the end of this PDF document.





For the artworks on the walls I've put some of my favourites from the collection into tiny frames at the end of this PDF document so you can print and cut them out.

A printable version of the above image is at the end of this PDF document.

Then it's over to you to 'curate' your gallery however you like!



Why not draw, paint or collage your own versions of the artworks? I even asked my family to help me out.



You could use a toy or your favourite stone as a sculpture too.



If you use sticky tac to put the pictures on the walls you can keep changing your gallery around and add new things all the time.



Make versions of your favourite artworks, add a self-portrait or get a grown up to print out photos to fit the frames. Enjoy your mini gallery at home!

Print these famous works and add them to your gallery.



John Constable – Landscape with Clouds
1820-1822



Georges Braque - 1882-1963 - Birds in Flight -
ca 1953-55



Eugène Delacroix - 1798-1863
- New Born Lamb



John Constable - 1776-1837
- Ash Tree



Lucian Freud - 1922- - Portrait of Kitty
1948-9

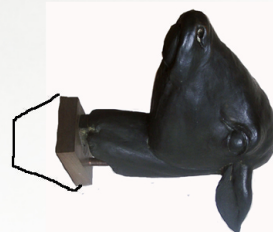
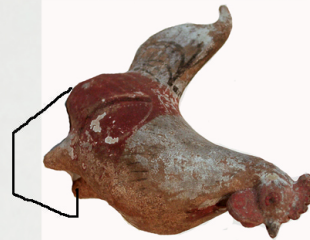
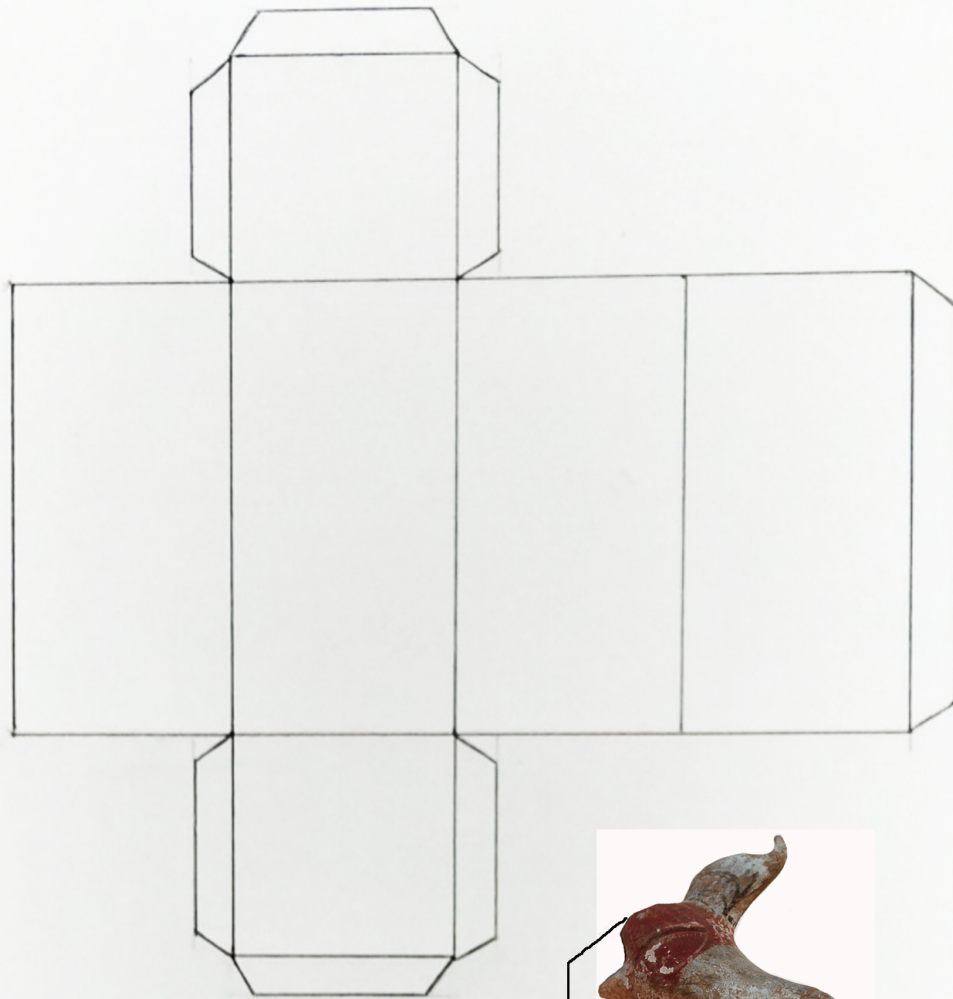


Theodore Garman - 1924-1954 - Roland Joffé
1950



Sir Jacob Epstein - 1880-1959 - Sunflowers
1943

Use this template to make a plinth.



These children's workshops have been created by our team of artist-educators and are available as films or downloadable worksheets on our website: www.thenewartgallerywalsall.org.uk/families-kids/childrens-online-digital-activities