

The New
Art Gallery
Walsall

Paper Bag Plinth People *by Kate Tilley*

Turn your home into an art gallery with these easy to make 'Paper Bag Plinth People'

Materials:

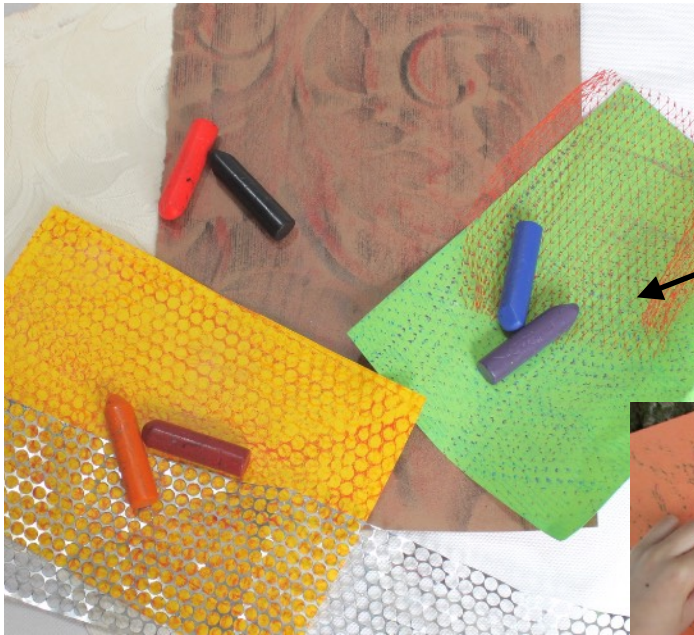
For the Paper bag people: Paper bags or envelopes of any shape or size, coloured paper and wrapping or tissue paper scraps, a pencil, wax crayons, scissors, sticky tape, glue and some newspaper.

You'll also need to find some bits of texture for wax rubbings so these can be bits and bobs like textured wallpaper or plastic netting or you can go outside to find your textures.

For the plinths: Boxes to fit your bags, like packing boxes, or cereal boxes or tea packets for smaller plinths.



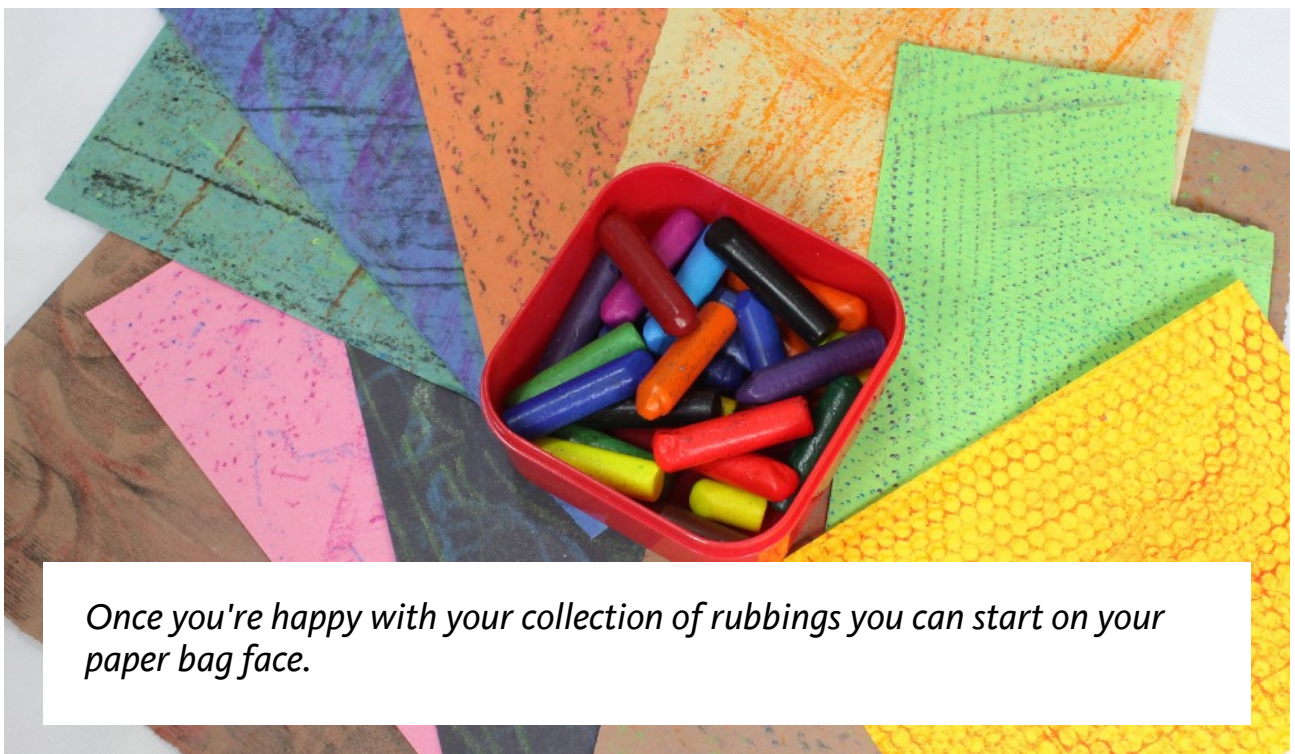
First let's get some textures to use. I love doing wax crayon rubbings, just put a piece of paper over something slightly bumpy like this brick wall and rub your crayon (use it on it's side) over the paper and the pattern will appear like magic!



So you can use indoor bits and bobs like these.



Or see how many different textures you can find outside. It looks even better if you use a few different colours. —



Once you're happy with your collection of rubbings you can start on your paper bag face.

It might help to stuff the bag or envelope with a bit of newspaper and tape it shut at the top (you can keep it like this or open it up again later to use it as a bag too)

I like to rip the paper, especially for the hair but you can of course draw out the shapes you want and cut them out with scissors too.



So after you've glued on the hair around the top and sides of the bag you can make some eyes. Again rip or cut the shapes, building it up in layers for the eyeball, iris and pupil like this.





Top tip:

To get 2 eyes the same shape and size, just fold the paper and rip or cut 2 out at the same time.

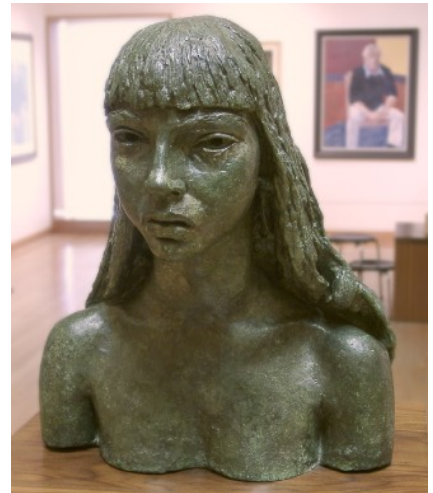


Keep adding features until your paper bag person is complete.





For this 'Paper Bag Person' I was inspired by Jacob Epstein's sculpture of his daughter, 'First portrait of Esther with long hair'.



You could make a self-portrait or someone you know, or search the gallery's collection on the website for inspiration.



This one is based on a portrait I really love, of Roland Joffé as a little boy, by Epstein's son, Theodore Garman.



It's fun to get your family and friends to make one too and let your imaginations go wild – a disco diva, an alien or your favourite super-magical, warrior princess! Who will you make?

To display your sculpture you can make a plinth like the ones we display the artworks on at the gallery. Use a packaging box, cereal boxes or a food packet, whatever will fit your sculpture.

First you'll need to open up your box. Get a grown up to help you cut down the side.

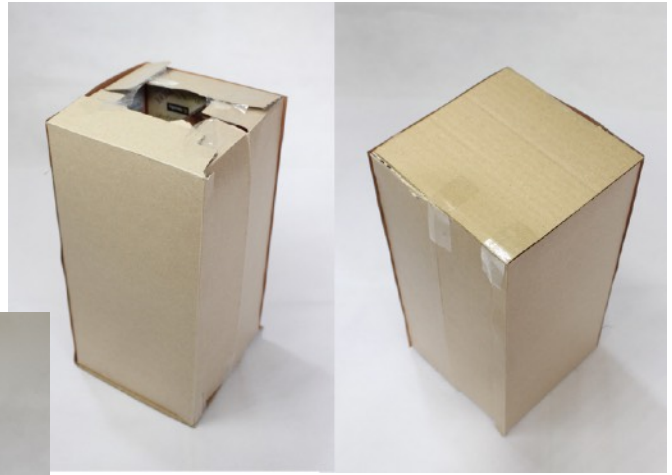


If it's quite long and thin like a cereal box just draw a line down the fold in the middle of the box and then measure 2 more lines to divide it into quarters.

If you get a grown-up to help you score down these lines with some scissors you can fold the box 'inside-out' into a better plinth shape and tape it together.



Then add a square of cardboard to the top to make it more stable.



Keep this as it is or use some 'wooden' wax crayon texture to make it look like the plinths we have at the gallery.

Finally add a descriptive label with:

- The artist's name (that's you).*
- The title of the artwork.*
- The date it was made.*
- The medium used (paper bag/mixed materials)*



So now you're ready for your 'Paper Bag Plinth People' preview party!

These children's workshops have been created by our team of artist-educators and are available as films or downloadable worksheets on our website: www.thenewartgallerywalsall.org.uk/families-kids/childrens-online-digital-activities