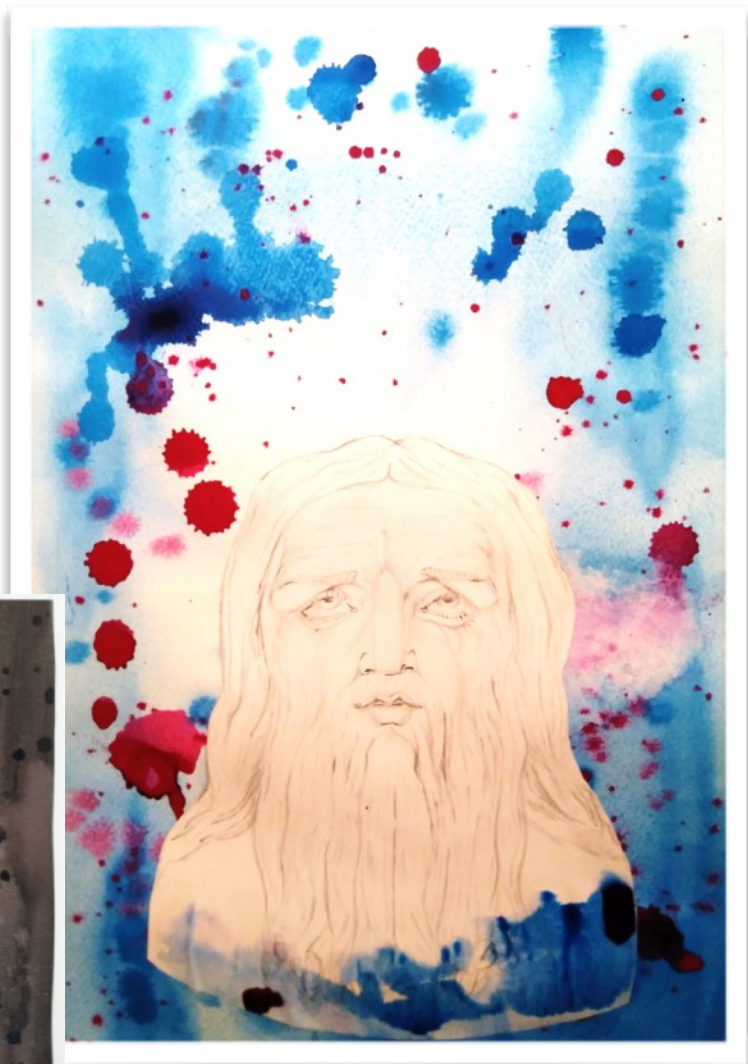


**The New
Art Gallery
Walsall**

Splatter, blobs and washes. *by Al Fawson*

**Mix a pencilled portrait with
wacky watercolours to create
a striking work of art.**



**Inspired by artwork 'Woman in a
Blindfold', 2016, a pencil, watercolour,
ink and collaged drawing on paper by
artist Rachel Goodyear. Part of the
Gallery's permanent collection.**

Materials:

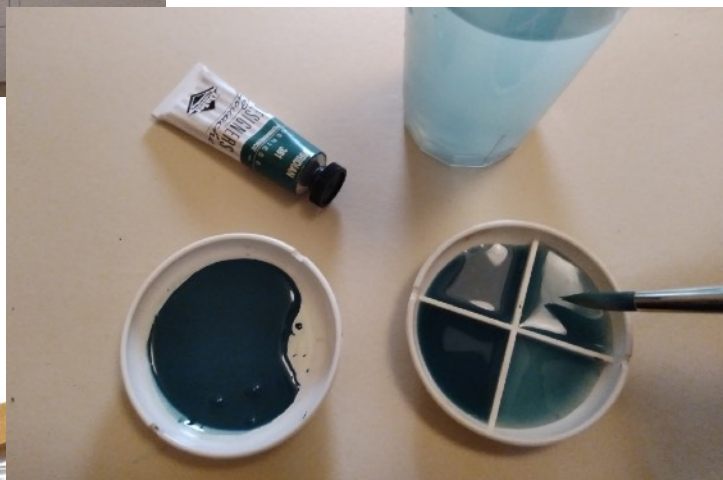
Water colour paints, paint mixing dishes, a selection of brushes, two cups of clean water, pipette, water colour paper, A4 plain paper, a portrait image to copy, pencil, scissors, glue stick, masking tape.



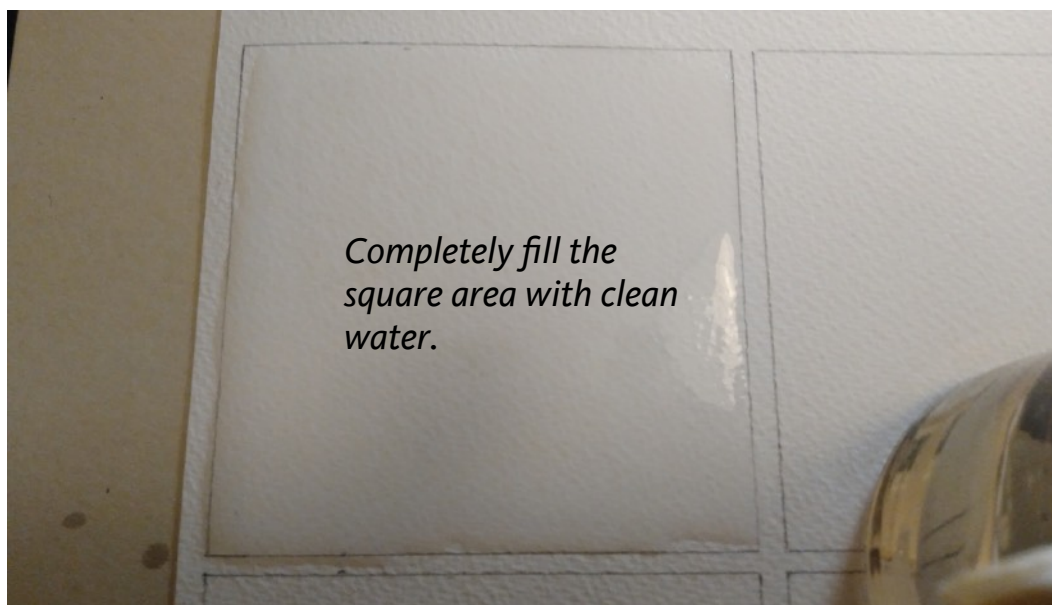
First, experiment with the paint effects you can create:

Draw some squares, about 10cm wide onto a piece of watercolour paper. These will be your testing squares for the Splatter, blobs and washes of paint.

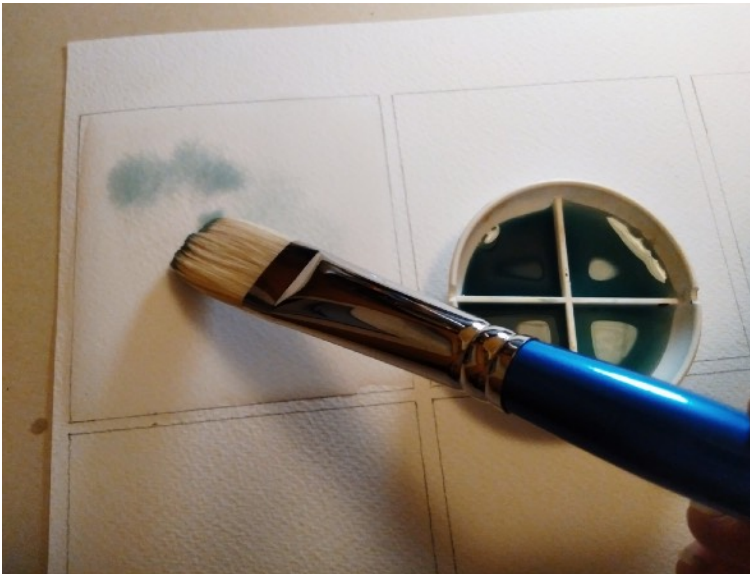
Mix some watercolour paint with water. Try mixing different amounts of water with the paint to create various strengths of pigment.



Using a wide brush and your cup of clean water, apply a layer of water to one of the squares. Handy tip, use one cup of water to wash your brushes out and keep the other separate and clean for applying the water to the paper.



Completely fill the square area with clean water.

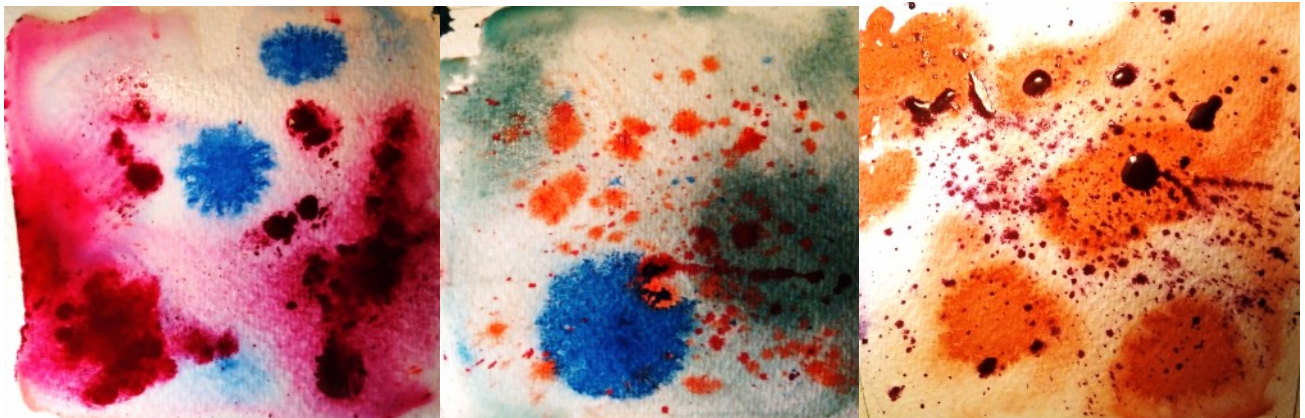


Apply colour by wetting a brush, dipping it into one of your paints and dabbing onto the wet square.

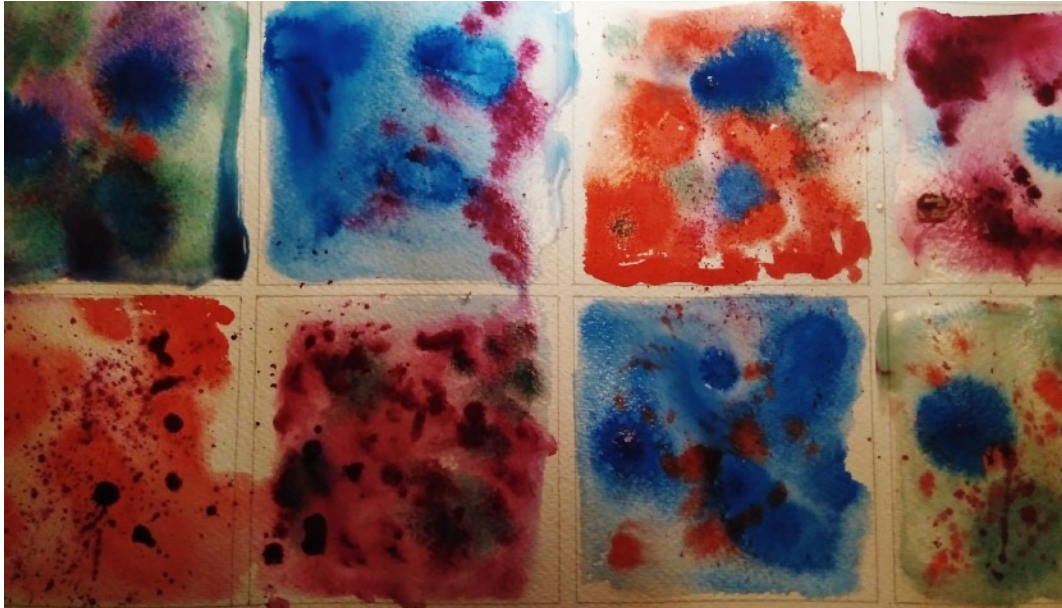


Experiment with less diluted pigment, watching how the colour bleeds into the wet paper to create random shapes.

Use the other squares to repeat the water process with clean water to then try different coloured paints, different washes, splashes and blobs. Experiment with different techniques, like dropping paint from a pipette, or flicking the end of your brush over the squares. You could also try letting some parts dry slightly before adding additional colours.



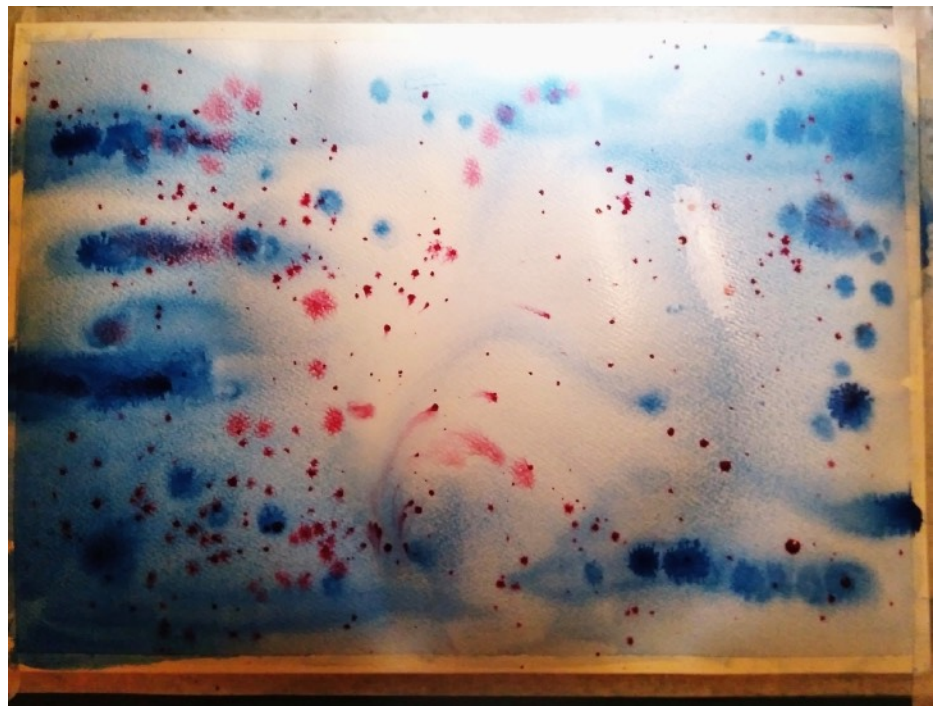
Once you have filled in your experimental watercolour squares, choose which colours and techniques that you like the most.



Time to make your final piece!

Take a larger piece of watercolour paper and use masking tape around the edges to secure it to a board. This will help the paper stay flat when you wet it.

Using a large brush and clean water, cover the surface of the paper with a layer of water. Then repeat the process of washes, blobs and splatters of paint across the surface, using the colours and techniques you liked from your practice squares, then leave to dry.



Whilst the paint patterns dry, take your portrait image and using the plain A4 paper and your pencil, draw a light line drawing of the image. You could trace the image or use a portrait from a magazine if this is easier for you.



Cut around the outline of your portrait image.



Once your paint splatter design is dry, use glue to stick your portrait onto the watercolour background.

Finally, to visually combine the layers, add some watercolour paint to the edge of your portrait

Your work of art is complete!



These children's workshops have been created by our team of artist-educators and are available as films or downloadable worksheets on our website: www.thenewartgallerywalsall.org.uk/families-kids/childrens-online-digital-activities